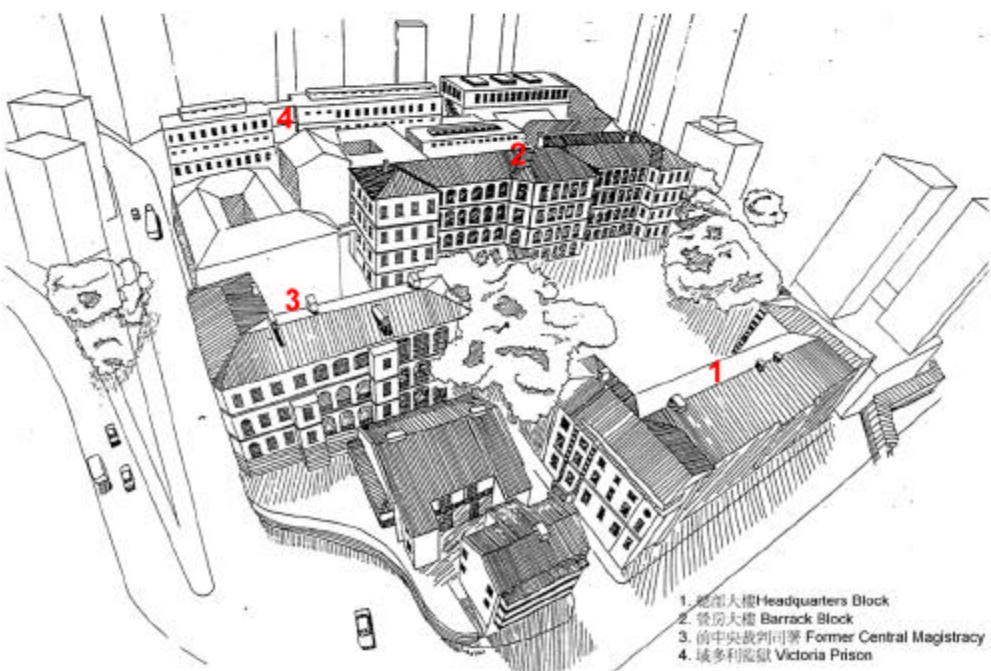


Central Police Station 中區警署



中大建築系「活·在建築」計劃
Live · Architecture Programme, Department of Architecture,
The Chinese University of Hong Kong

中區警署建築群

中區警署建築群乃現時全港歷史最悠久、最富維多利亞及愛德華時代建築特色之古蹟，其中以中區警署、前中央裁判司署及域多利監獄三組建築群最為有歷史、建築及文化價值。

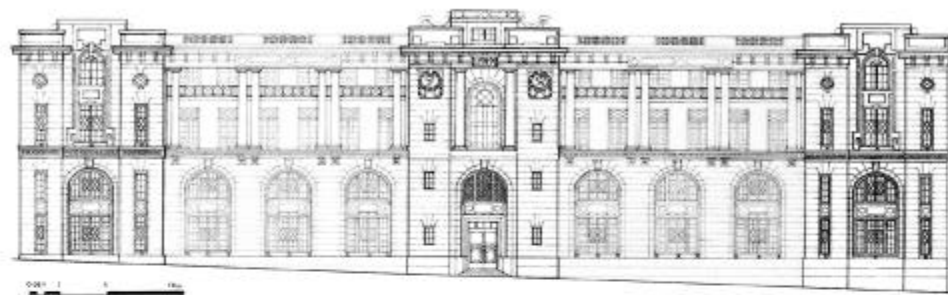
由執法、司法到收監程序都在這群建築物中處理，標誌了香港法治及執法的歷史

Central Police Station Compound

Central Police Station Compound is one of the oldest heritage with the richest Victorian, Edwardian architectural style. The Central Police Station, the former Central Magistracy and Victoria Prison are the most significant in historical, architectural and cultural values.

The consolidation of enforcement, jurisdiction and imprisonment in the compound and highlights the history of law and order in Hong Kong

Architectural Features 建築特色



中區警署主座

- 北面立面由富有西方建築風格的希臘式柱子及羅馬圓拱所組成
- 南面立面則是簡約的石構立面



Central Police Station Headquarter Block

- North elevation: rich facade by employing Greek Doric columns and Roman arches
- South elevation: simple masonry facade

中區警署次座

- 維多利亞式殖民地建築
- 佈局以西方的黃金比例而分佈
- 混合了中、西建築風格，引用了木梳子、露台等對天然光及自然通風加以適當的調節
- 屋頂的瓦當是中國古建築的斜天面



Central Police Station Barrack Block

- Typical hybridized Victorian Colonial Style building
- Rectangular in plan in golden ratio
- wooden louvers, balcony, sun shading, wind shielding to adapt Hong Kong's climate
- Chinese tile roof and details with Chinese patterns

前裁判司署

- 中西建築風格的融合
- 高台中部有六條希臘多利克式柱子，四方以方型大石柱承托
- 立面由紅磚及花崗岩建成



Former Central Magistracy

- Mixture of Chinese and Western Architectural Style
- 6 Greek style column in Doric order
- red brick facade (from Guangzhou)

資料來源：康樂及文化事務署古物及古蹟辦事處
Source: Antiquities and Monuments Office, Leisure and Cultural Services Department

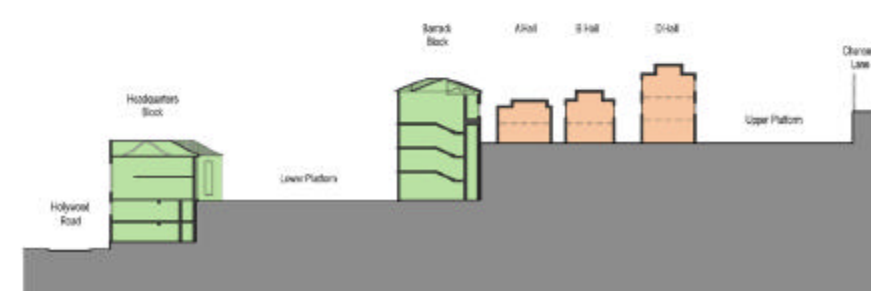
Possibility and Visualization 中區警署的發展潛質

Criteria set

Buildings in the Central Police Station Compound are divided into 2 types:
Type "A" – to be conserved externally and internally
Type "B" – to be conserved externally

保育條件

中區警署建築群可以分為兩大類
“甲”類：整棟建築物，包括外內牆壁和結構均需保育
“乙”類：只需保育外牆



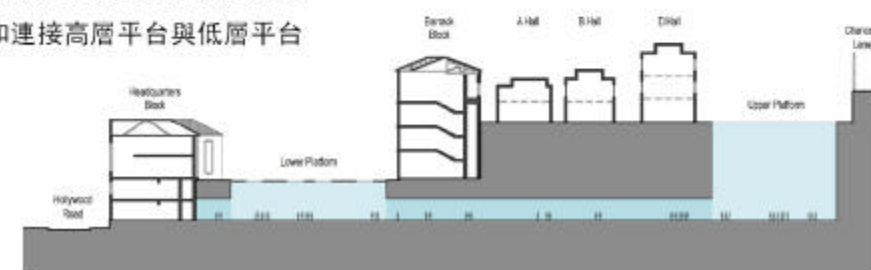
To restore the Central Police Station Compound, the heritage aspects of the site, the design features and the quality of restoration must be considered.

中區警署建築群極富有歷史文化價值，有可保育，同時亦可發展的潛質

Possibility 1 – Underground Space

Underground Space can be utilized to maximize the floor area, to fully utilize the site, and to connect the upper platform with the lower platform.

方案一：地下道與地下空間能擴大樓面面積並有效善用建築群的空间和連接高層平台與低層平台



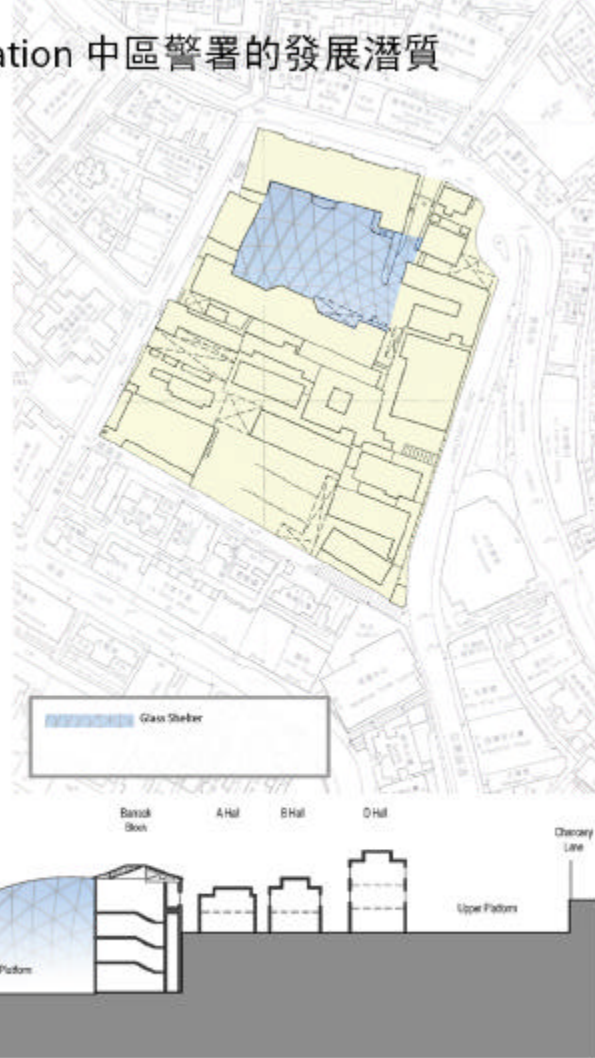
Possibility and Visualization 中區警署的發展潛質

Possibility 4 – Glass Shelter

Glass Shelter can be introduced to the open plaza in the lower platform of the Central Police Station Compound to provide weather-free open space and to introduce special quality and identity to the gathering space.

方案四：天幕

有蓋“雨天”廣場給予廣場獨特的個性



Possibility 5 – F Hall Alternation

Since F Hall is the only building in the Central Police Station Compound that may be demolished, the replacement of F Hall with a new development with the maximum allowable building height is shown in the below diagram. One can see the impact of the proposed new building

to the neighboring Central Police Station Compound as well as the surrounding site.

方案五 – F倉改建

下圖是當F倉被拆卸並改建至最高可建樓宇高度時的想像圖，從圖可見此新建築對整座建築群和附近環境的影響。



Central Police Station Heritage Taskforce 中區警署古蹟關注組

由多個關注中區警署古蹟群發展的廣泛專業團體、環保團體及社區組織組成，包括：comprises:

香港建築師學會 Hong Kong Institute of Architects • 長春社 Conservancy Association • 香港可持續發展公民議會 Hong Kong People's Council for Sustainable Development • 中西區發展關注組 Central and Western District Development Concern Association • 美國建築師學會（香港分會） American Institute of Architects (Hong Kong Chapter) • 香港中文大學建築系「活·在建築」計劃 Live • Architecture Programme, Department of Architecture, The Chinese University of Hong Kong • 其他公民組織 Action Group for the Protection of Central Police Station Historical Compound



關注組多次舉辦不同形式的活動，收集社區各界對保育中區警署古蹟群的意見。

The Task Force has organized different functions to collect public views on the conservation of Central Police Station Heritage

04.09 - 04.10

問卷調查 Questionnaire Survey

中區警署古蹟關注組於2004年9月至10月期間進行問卷調查，收集各界就中區警署保育發表意見。問卷調查結果顯示大部分公眾認同於招標同時中區警署古蹟群應得到適當關注及保育。

The CPS Taskforce has undertaken a survey to collect public views on the conservation of Central Police Station Site. The results demonstrated the predominant public opinions that they agreed that Central Police Station should receive the absolute respect and attention for conservation in the tendering.

04.09.25

中區警署項目圓桌會 Roundtable Forum on Central Police Station Heritage Project

中區警署古蹟關注組於香港設計中心舉行圓桌會，討論中區警署項目的招標及評審機制事宜。圓桌會中提出的意見重點：

- 政府應全面檢討中區警署古蹟群之招標及評審機制。
- 政府應確實考慮中區警署古蹟群應為古蹟保育而非旅遊業發展。
- 古蹟群之未來發展應廣泛徵詢公眾意見。

The Central Police Station Heritage Taskforce held a Roundtable Forum at Hong Kong Design Centre to discuss the tender and assessment mechanisms in respect of Central Police Station Project. Major Ideas raised at the Round Table Forum:

- The Government should comprehensively review the tendering and assessment mechanism for the Central Police Station.
- The Government should duly consider that it is a project for heritage conservation rather than tourism development.
- The future uses of the heritage should be open for public opinions.



04.10.12

去函特首 Letter to Chief Executive

關注組去函特首，信函附有關注組的建議書。經濟發展及勞工局局長葉澍堃就有關中區警署項目於2004年11月1日回函致關注組。

The CPS Heritage Taskforce sent the Proposal of the Citizen-Envisioned Participatory Assessment Model to the Chief Executive. Stephen Ip, Secretary for Economic Development and Labour replied to the CPS Heritage Taskforce, regarding Central Police Station Project on 1st November 2004.

04.11.04

去函立法會議員 Letter to LegCo Member

中區警署古蹟關注組就有關中區警署古蹟群之保育，去函立法會民政事務委員會主席張宇人議員，信函附有關注組的建議書。

The CPS Heritage Taskforce submitted a proposal to Hon Cheung Yue Yan, Chairman of Home Affairs Panel, Hong Kong Legislative Council.

04.11.08

記者會 Press Meeting

中區警署古蹟關注組舉行記者會，發表「新民共建、全民共享」善用中區警署古蹟群的新模式。

A Press Meeting was held on 8 November 2004, Central Police Station Heritage Taskforce presented Chinese version of Citizen-Envisioned Participatory Assessment Model (CEPAM).

